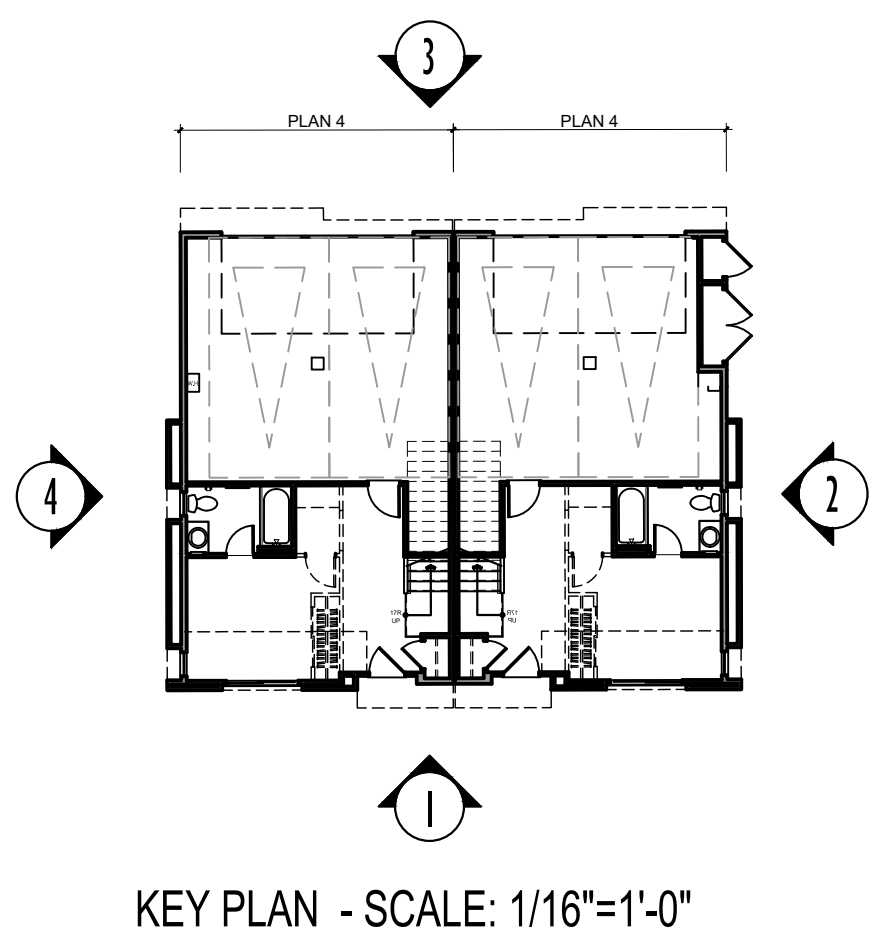




- MATERIAL LEGEND**
1. STUCCO, LIGHT SAND FINISH
 2. FIBER CEMENT LAP SIDING, 6" EXPOSURE
 3. VINYL WINDOWS
 4. METAL AWNING
 5. FLAT BAR METAL RAILING
 6. FIBERGLASS ENTRY DOOR
 7. FIBER CEMENT BUILDING TRIM
 8. DECORATIVE EXTERIOR LIGHT
 9. ILLUMINATED ADDRESS SIGN
 10. METAL DECORATIVE COLUMNS
 11. SECTIONAL METAL GARAGE DOOR
 12. ROOF MOUNTED AC UNITS
 13. DECK SCUPPERS



NOTE: COLOR SCHEME 2 DEMONSTRATED ON ELEVATIONS



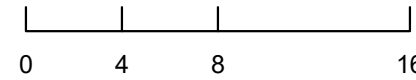
Architecture + Planning
17911 Von Karman Ave,
Suite 200
Irvine, CA 92614
949.851.2133
ktgy.com



Warmington Residential
3090 Pullman Street
Costa Mesa, CA 92626
714.434.4439

717 S. LYON STREET
SANTA ANA, CA KTGY # 2021-0430

Plot Date: 6/6/2022
1st Submittal: 12-16-2021
2nd Submittal: 04-13-2022
3rd Submittal: 06-06-2022

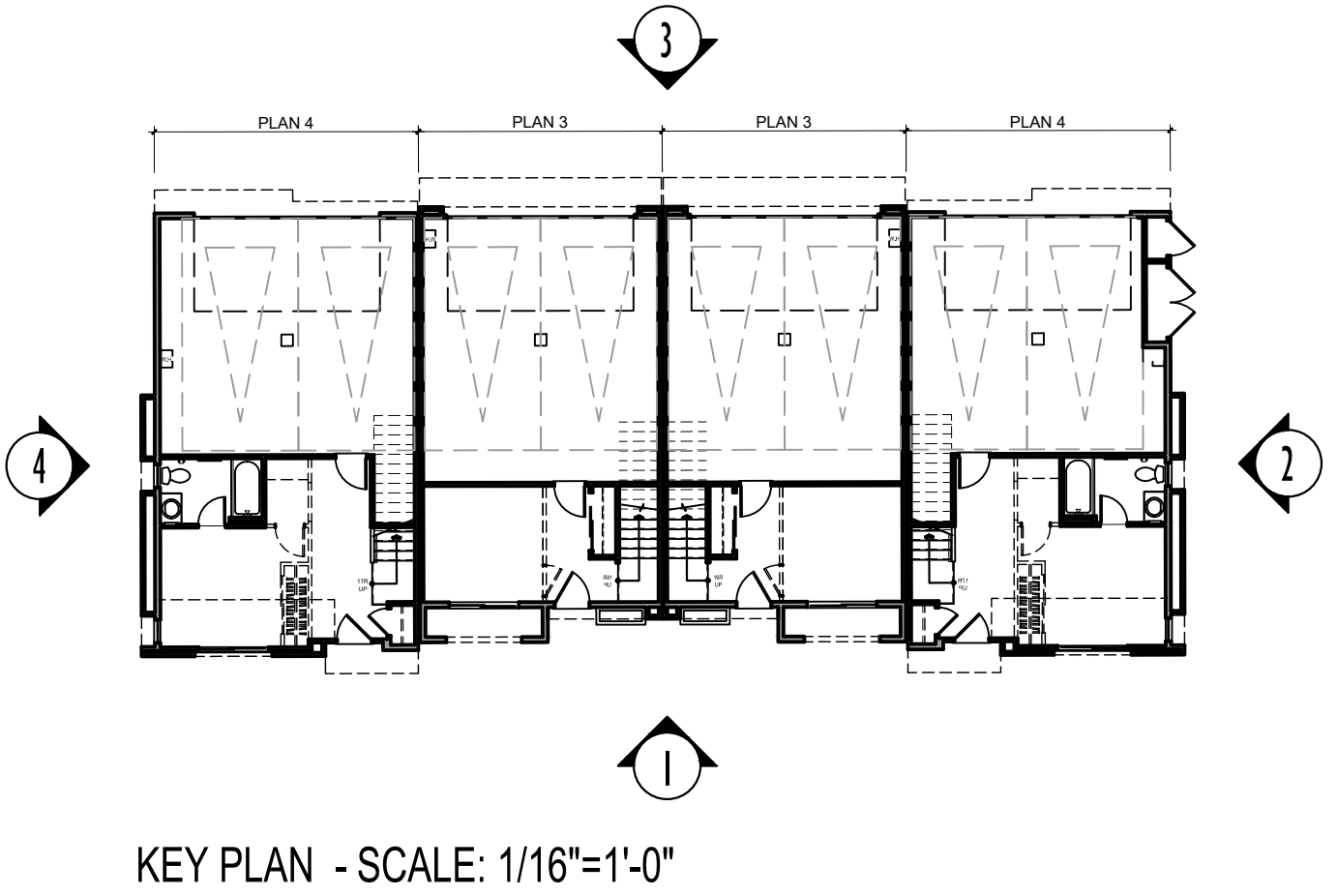


**2-PLEX
ELEVATIONS**

A2.01



- MATERIAL LEGEND**
1. STUCCO, LIGHT SAND FINISH
 2. FIBER CEMENT LAP SIDING, 6" EXPOSURE
 3. VINYL WINDOWS
 4. METAL AWNING
 5. FLAT BAR METAL RAILING
 6. FIBERGLASS ENTRY DOOR
 7. FIBER CEMENT BUILDING TRIM
 8. DECORATIVE EXTERIOR LIGHT
 9. ILLUMINATED ADDRESS SIGN
 10. METAL DECORATIVE COLUMNS
 11. SECTIONAL METAL GARAGE DOOR
 12. ROOF MOUNTED AC UNITS
 13. DECK SCUPPERS



NOTE: COLOR SCHEME 1 DEMONSTRATED ON ELEVATIONS



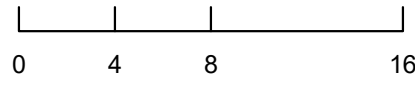
Architecture + Planning
17911 Von Karman Ave,
Suite 200
Irvine, CA 92614
949.851.2133
ktgy.com



Warmington Residential
3090 Pullman Street
Costa Mesa, CA 92626
714.434.4439

717 S. LYON STREET
SANTA ANA, CA KTGY # 2021-0430

Plot Date: 6/6/2022
1st Submittal: 12-16-2021
2nd Submittal: 04-13-2022
3rd Submittal: 06-06-2022



**4-PLEX-A
ELEVATIONS**

A2.11



1 - FRONT



2 - RIGHT

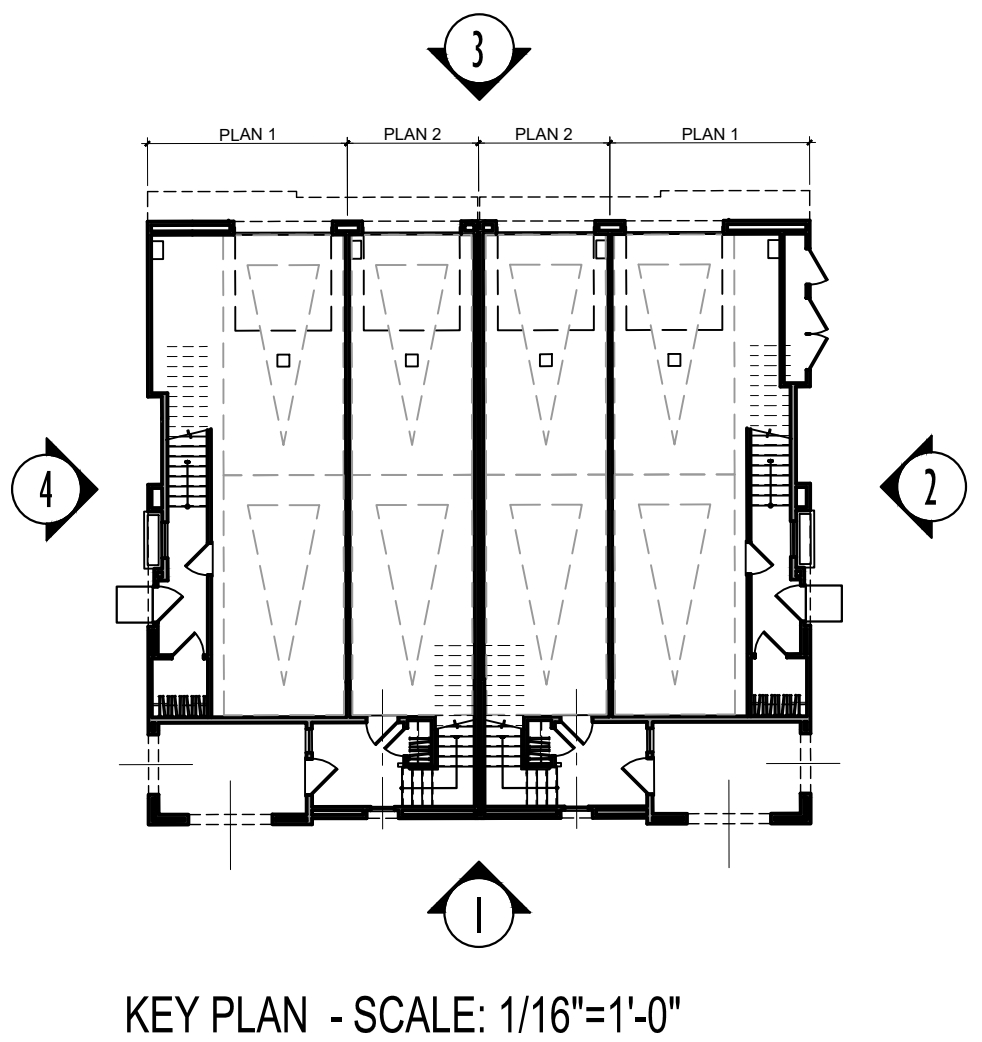


3 - REAR



4 - LEFT

- MATERIAL LEGEND**
1. STUCCO, LIGHT SAND FINISH
 2. FIBER CEMENT LAP SIDING, 6" EXPOSURE
 3. VINYL WINDOWS
 4. METAL AWNING
 5. FLAT BAR METAL RAILING
 6. FIBERGLASS ENTRY DOOR
 7. FIBER CEMENT BUILDING TRIM
 8. DECORATIVE EXTERIOR LIGHT
 9. ILLUMINATED ADDRESS SIGN
 10. METAL DECORATIVE COLUMNS
 11. SECTIONAL METAL GARAGE DOOR
 12. ROOF MOUNTED AC UNITS
 13. DECK SCUPPERS



NOTE: COLOR SCHEME 1 DEMONSTRATED ON ELEVATIONS



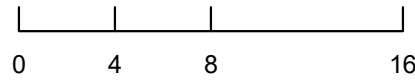
Architecture + Planning
17911 Von Karman Ave,
Suite 200
Irvine, CA 92614
949.851.2133
ktgy.com



Warmington Residential
3090 Pullman Street
Costa Mesa, CA 92626
714.434.4439

717 S. LYON STREET
SANTA ANA, CA KTGY # 2021-0430

Plot Date: 6/6/2022
1st Submittal: 12-16-2021
2nd Submittal: 04-13-2022
3rd Submittal: 06-06-2022

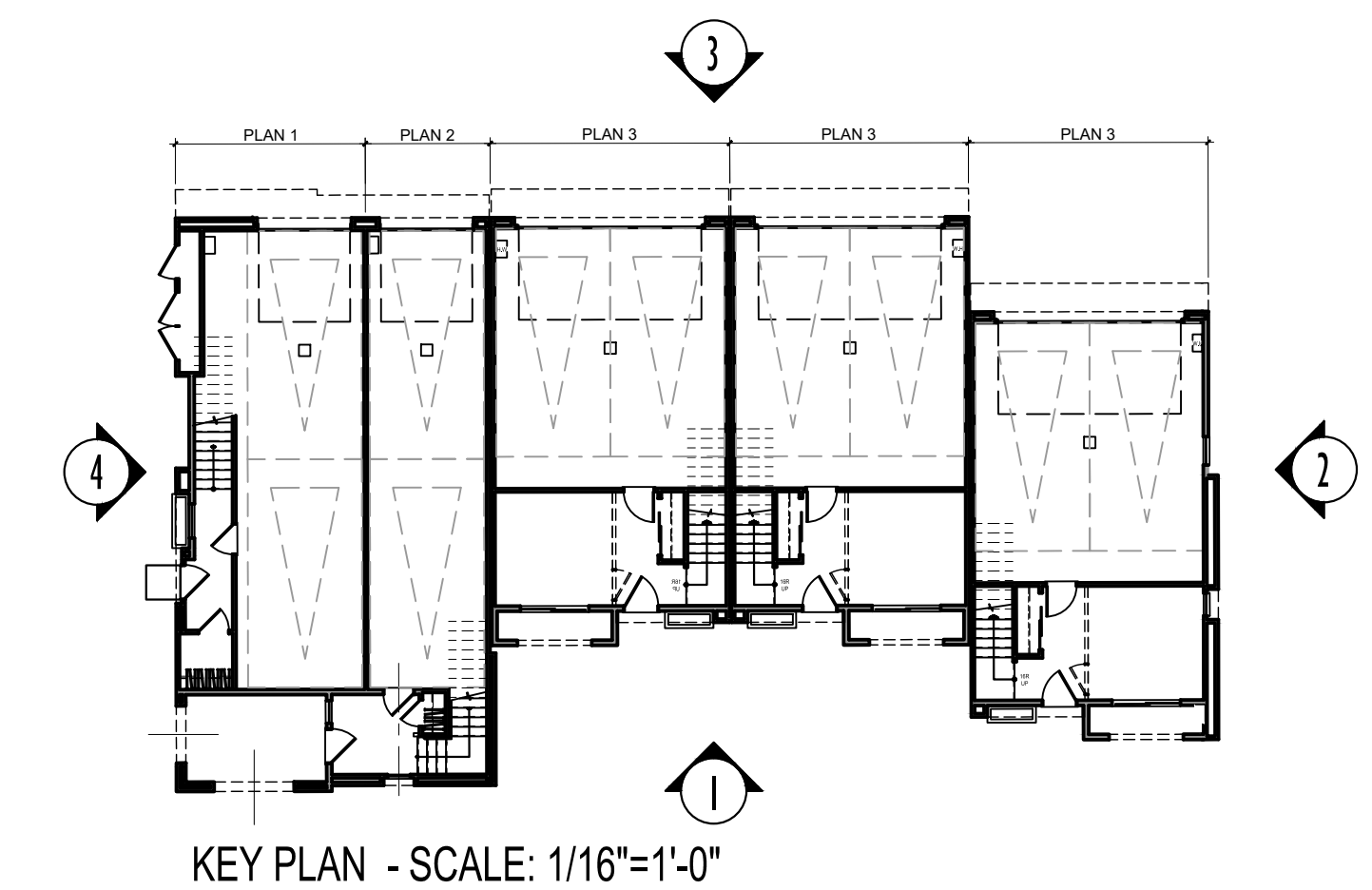


**4-PLEX-B
ELEVATIONS**

A2.21



- MATERIAL LEGEND**
1. STUCCO, LIGHT SAND FINISH
 2. FIBER CEMENT LAP SIDING, 6" EXPOSURE
 3. VINYL WINDOWS
 4. METAL AWNING
 5. FLAT BAR METAL RAILING
 6. FIBERGLASS ENTRY DOOR
 7. FIBER CEMENT BUILDING TRIM
 8. DECORATIVE EXTERIOR LIGHT
 9. ILLUMINATED ADDRESS SIGN
 10. METAL DECORATIVE COLUMNS
 11. SECTIONAL METAL GARAGE DOOR
 12. ROOF MOUNTED AC UNITS
 13. DECK SCUPPERS



NOTE: COLOR SCHEME 1 DEMONSTRATED ON ELEVATIONS



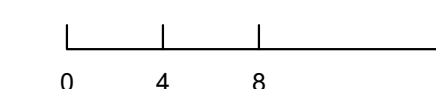
Architecture + Planning
17911 Von Karman Ave,
Suite 200
Irvine, CA 92614
949.851.2133
ktgy.com



Warmington Residential
3090 Pullman Street
Costa Mesa, CA 92626
714.434.4439

717 S. LYON STREET
SANTA ANA, CA KTGY # 2021-0430

Plot Date: 6/6/2022
1st Submittal: 12-16-2021
2nd Submittal: 04-13-2022
3rd Submittal: 06-06-2022

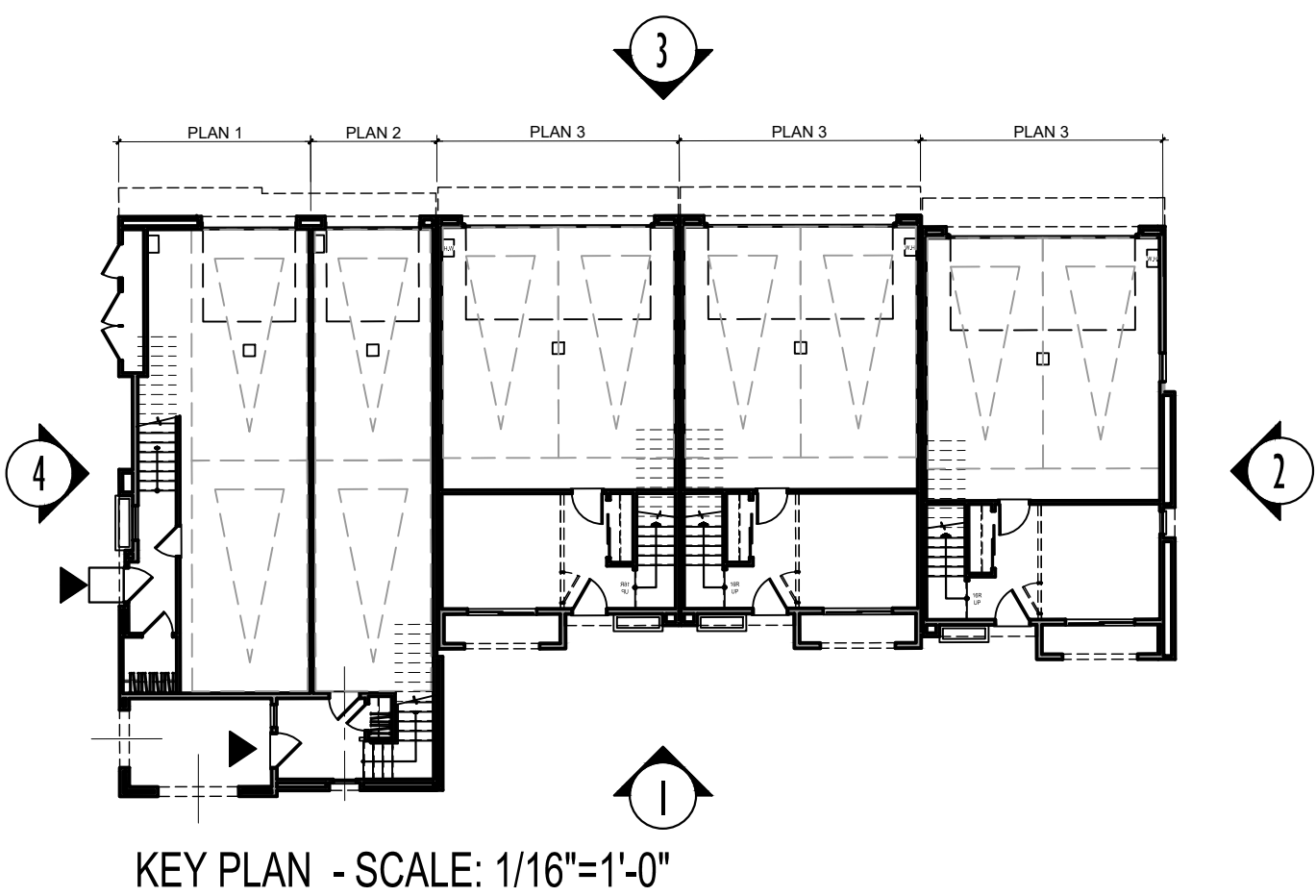


**5-PLEX-A
ELEVATIONS**

A2.31



- MATERIAL LEGEND**
1. STUCCO, LIGHT SAND FINISH
 2. FIBER CEMENT LAP SIDING, 6" EXPOSURE
 3. VINYL WINDOWS
 4. METAL AWNING
 5. FLAT BAR METAL RAILING
 6. FIBERGLASS ENTRY DOOR
 7. FIBER CEMENT BUILDING TRIM
 8. DECORATIVE EXTERIOR LIGHT
 9. ILLUMINATED ADDRESS SIGN
 10. METAL DECORATIVE COLUMNS
 11. SECTIONAL METAL GARAGE DOOR
 12. ROOF MOUNTED AC UNITS
 13. DECK SCUPPERS



NOTE: COLOR SCHEME 1 DEMONSTRATED ON ELEVATIONS



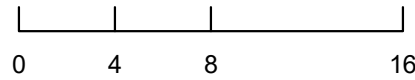
Architecture + Planning
17911 Von Karman Ave,
Suite 200
Irvine, CA 92614
949.851.2133
ktgy.com



Warmington Residential
3090 Pullman Street
Costa Mesa, CA 92626
714.434.4439

717 S. LYON STREET
SANTA ANA, CA KTGY # 2021-0430

Plot Date: 6/6/2022
1st Submittal: 12-16-2021
2nd Submittal: 04-13-2022
3rd Submittal: 06-06-2022

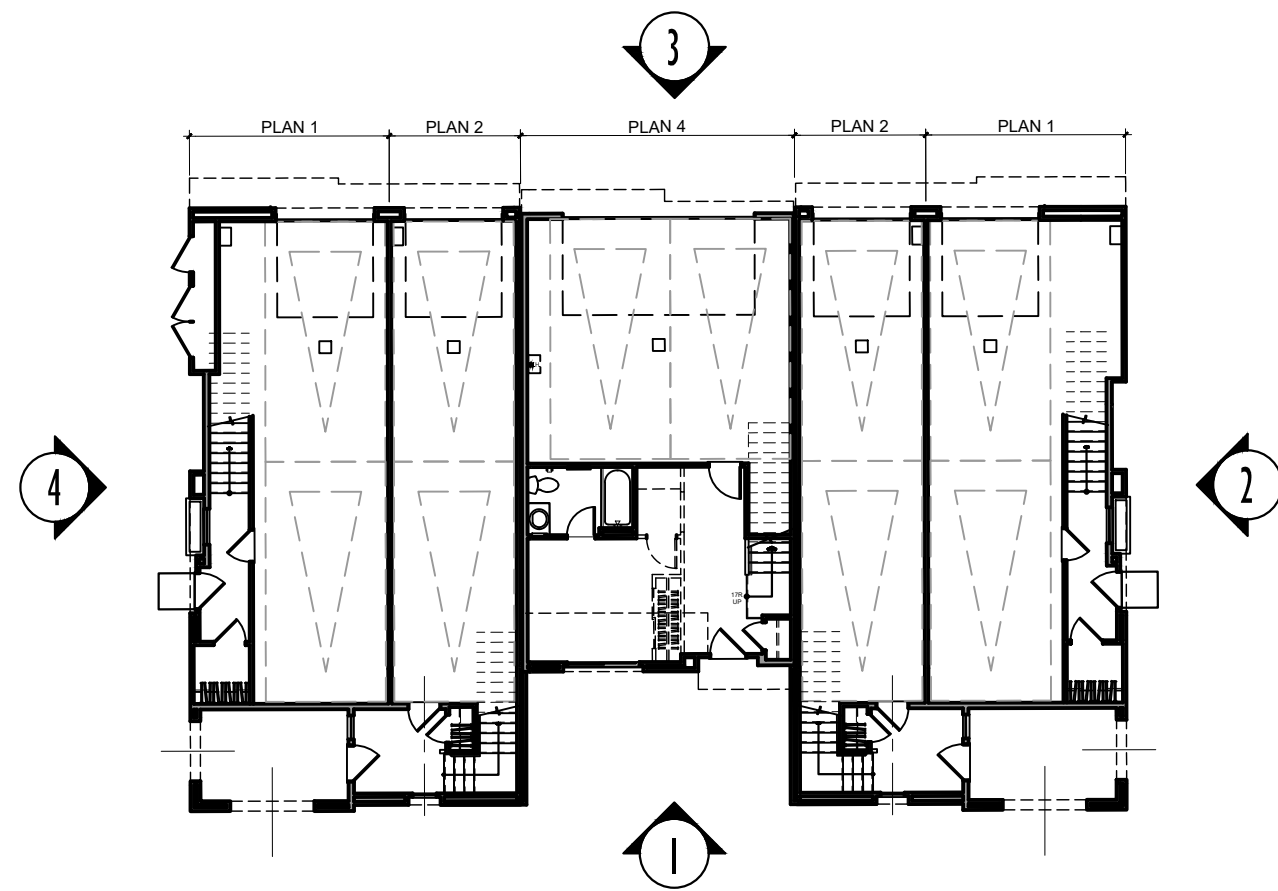


**5-PLEX-B
ELEVATIONS**

A2.41



- MATERIAL LEGEND**
1. STUCCO, LIGHT SAND FINISH
 2. FIBER CEMENT LAP SIDING, 6" EXPOSURE
 3. VINYL WINDOWS
 4. METAL AWNING
 5. FLAT BAR METAL RAILING
 6. FIBERGLASS ENTRY DOOR
 7. FIBER CEMENT BUILDING TRIM
 8. DECORATIVE EXTERIOR LIGHT
 9. ILLUMINATED ADDRESS SIGN
 10. METAL DECORATIVE COLUMNS
 11. SECTIONAL METAL GARAGE DOOR
 12. ROOF MOUNTED AC UNITS
 13. DECK SCUPPERS



KEY PLAN - SCALE: 1/16"=1'-0"

NOTE: COLOR SCHEME 2 DEMONSTRATED ON ELEVATIONS



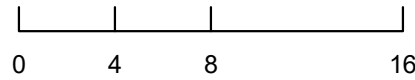
Architecture + Planning
17911 Von Karman Ave,
Suite 200
Irvine, CA 92614
949.851.2133
ktgy.com



Warmington Residential
3090 Pullman Street
Costa Mesa, CA 92626
714.434.4439

717 S. LYON STREET
SANTA ANA, CA KTGY # 2021-0430

Plot Date: 6/6/2022
1st Submittal: 12-16-2021
2nd Submittal: 04-13-2022
3rd Submittal: 06-06-2022



**5-PLEX-C
ELEVATIONS**

A2.51